

FIELD DATA COLLECTION NOTICE

Located in the heart of Mount Pleasant, Highway 41 is a key corridor connecting bustling US 17 in Charleston County to the traveling public and communities in Berkeley County. The Highway 41 Corridor Improvements project is a top priority of Charleston County, the Town of Mount Pleasant, and the South Carolina Department of Transportation.

As part of the National Environmental Policy Act process, Charleston County will engage the community to help complete an extensive environmental analysis of the project area to reflect the best corridor improvements for the area and its citizens.

CURRENT ACTIVITIES

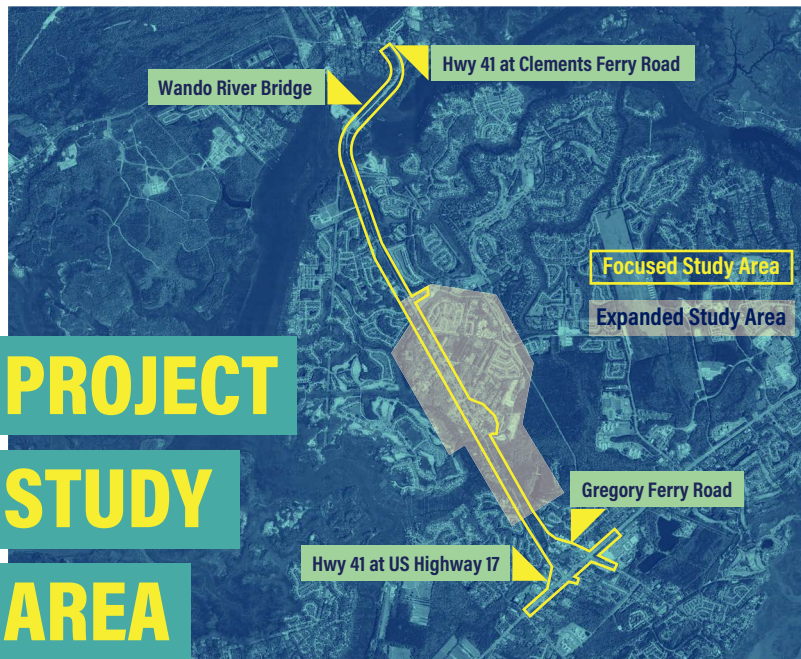
The project team is currently gathering information in your area to better understand existing conditions of the human and natural environments. You may see project personnel around your neighborhood or business collecting data on existing conditions including wetlands/streams, noise and buildings. Field personnel will be in the project area through the end of the year and will strive to minimize inconveniences to you.

ADDITIONAL INFORMATION

Learn more by visiting www.hwy41sc.com

Leave a message for the project team: **843-972-4403**

PROJECT STUDY AREA



The project study area has been defined as a mainline corridor of SC 41 from US 17 in Mt. Pleasant across the new Wando River Bridge to Clements Ferry Road in Berkeley County. The project also includes improvements to the intersection of SC 41 and US 17 and completion of the tie in of Gregory Ferry Road to SC 41 near US 17. The study corridor also includes US 17 from the intersection with Hamlin Road to the entrance to Oakland Plantation and an expanded study area around Laurel Hill County Park and the Phillips Community between Bessemer Road and Dunes West Boulevard. The purpose of the expanded study area is to fully evaluate the potential project effects on the County Park, adjacent communities, and associated roadways. Residential communities along SC 41 include the Phillips Community, Dunes West, Park West, Rivertowne and Planter's Point. Additionally, the project study area includes crossings over Horlbeck, Mill and Wagner Creeks.

c/o Charleston County
4400 Leeds Avenue, Suite 450
North Charleston, SC 29405



Charleston County
Transportation Development

FIELD DATA COLLECTION NOTICE